

NORTH POWERLINE ROAD COMMUNITY DEVELOPMENT DISTRICT
AMENDED AND RESTATED RULES RELATING TO PARKING AND PARKING ENFORCEMENT

In accordance with Chapter 190, *Florida Statutes*, and on August 6, 2024, at a duly noticed public meeting, the Board of Supervisors of the North Powerline Road Community Development District (“District”) adopted the following policy to govern parking and parking enforcement on certain District property (the “Policy”). This Policy repeals and supersedes all prior rules and/or policies governing the same subject matter.

SECTION 1. INTRODUCTION. The District finds that parked Commercial Vehicles, Vehicles, Vessels and Recreational Vehicles (hereinafter defined) on certain of its property (hereinafter defined) cause hazards and danger to the health, safety and welfare of District residents, paid users and the public. This Policy is intended to provide the District’s residents and paid users with a means to remove such Commercial Vehicles, Vehicles, Vessels and Recreational Vehicles from areas that are not designated for parking.

SECTION 2. DEFINITIONS.

- A. *Commercial Vehicle.* Any mobile item which normally uses wheels, whether motorized or not, that (i) is titled, registered or leased to a company and not an individual person, or (ii) is used for business purposes even if titled, registered or leased to an individual person.
- B. *Designated Parking Areas.* Areas which have been explicitly approved for parking by the District, including areas indicated by asphalt markings and areas designated on the map attached hereto as **Exhibit A** and indicated by signage.
- C. *Vehicle.* Any mobile item which normally uses wheels, whether motorized or not.
- D. *Vessel.* Every description of watercraft, barge, or airboat used or capable of being used as a means of transportation on water.
- E. *Recreational Vehicle.* A vehicle designed for recreational use, which includes motor homes, campers and trailers relative to same.
- F. *Abandoned/Broken-Down Vehicle.* A vehicle that has no license plate, is visibly not operational, or has not moved for a period of 7 days.
- G. *Parked.* A Vehicle, Vessel or Recreational Vehicle left unattended by its owner or user.
- H. *Tow-Away Zone.* District property in which parking is prohibited and in which the District is authorized to initiate a towing and/or removal action. **Any District Property not designated as a Designated Parking Area is a Tow-Away Zone.**

- I. *Overnight.* Between the hours of 10:00 p.m. and 6:00 a.m. daily.

SECTION 3. DESIGNATED PARKING AREAS. Parking is permitted only in Designated Parking Areas, as indicated by asphalt markings for parking spaces and as indicated on the map attached hereto as **Exhibit A** for certain on-street parking areas. On-street parking is expressly prohibited on District roadways except where indicated. **Any Vehicle parked on District Property, including District roads, if any, must do so in compliance with all laws, ordinances, and codes, and shall not block access to driveways and property entrances.**

SECTION 4. ESTABLISHMENT OF TOW-AWAY ZONES. All District Property which is not explicitly designated for parking shall hereby be established as “Tow-Away Zones” for all Vehicles, including Commercial Vehicles, Vessels, Recreational Vehicles as set forth in Section 5 herein (“**Tow-Away Zone**”).

SECTION 5. EXCEPTIONS.

- A. **ON-STREET PARKING EXCEPTIONS.** Commercial Vehicles, Recreational Vehicles, and Vessels are not permitted to be parked on-street Overnight and shall be subject to towing at Owner’s expense.
- B. **ABANDONED/BROKEN-DOWN VEHICLES.** Abandoned and/or broken-down Vehicles are not permitted to be parked on District Property at any time and are subject to towing at the Owner’s expense.
- C. **PARKING DURING AMENITY HOURS.** Vehicles may park in the designated parking areas of amenity facilities depicted in **Exhibit A** during the open hours of operations of such amenity facilities, including any District-authorized special events occurring outside of regular hours of operation. Otherwise, no Overnight parking is permitted at the amenity facilities.
- D. **VENDORS/CONTRACTORS.** The District Manager or his/her designee may authorize vendors/consultants in writing to park company vehicles in order to facilitate District business. All vehicles so authorized must be identified by a Parking Pass issued by the District.
- E. **DELIVERY VEHICLES AND GOVERNMENTAL VEHICLES.** Delivery vehicles, including but not limited to, U.S.P.S., U.P.S., Fed Ex, moving company vehicles, and lawn maintenance vendors may park on District property while actively engaged in the operation of such businesses. Vehicles owned and operated by any governmental unit may also park on District Property while carrying out official duties.

SECTION 6. TOWING/REMOVAL PROCEDURES.

- A. **SIGNAGE AND LANGUAGE REQUIREMENTS.** Notice of the Tow-Away Zones shall be approved by the District’s Board of Supervisors and shall be posted on District property in the manner set forth in Section 715.07, *Florida Statutes*. Such signage is to be placed in conspicuous locations, in accordance with Section 715.07, *Florida Statutes*.

- B. TOWING/REMOVAL AUTHORITY.** To effect towing/removal of a Commercial Vehicle, Vehicle, Vessel or Recreational Vehicle, the District Manager or his/her designee must verify that the subject Commercial Vehicle, Vehicle, Vessel or Recreational Vehicle was not authorized to park under this rule in the Overnight Parking Areas and then must contact a firm authorized by Florida law to tow/remove Commercial Vehicle, Vehicles, Vessels and Recreational Vehicles for the removal of such unauthorized vehicle at the owner's expense. The Commercial Vehicle, Vehicle, Vessel or Recreational Vehicle shall be towed/removed by the firm in accordance with Florida law, specifically the provisions set forth in Section 715.07, *Florida Statutes*. Notwithstanding the foregoing, a towing service retained by the District may tow/remove any vehicle parked in a Tow-Away Zone.
- C. AGREEMENT WITH AUTHORIZED TOWING SERVICE.** The District's Board of Supervisors is hereby authorized to enter into and maintain an agreement with a firm authorized by Florida law to tow/remove unauthorized vehicles and in accordance with Florida law and with the policies set forth herein.

SECTION 7. PARKING AT YOUR OWN RISK. Vehicles, Vessels or Recreational Vehicles may be parked on District property pursuant to this rule, provided however that the District assumes no liability for any theft, vandalism and/ or damage that might occur to personal property and/or to such vehicles.

SECTION 8. AMENDMENTS; DESIGNATION OF ADDITIONAL TOW-AWAY ZONES OR DESIGNATED PARKING AREAS. The Board in its sole discretion may amend these Rules Related to Parking and Parking Enforcement from time to time to designate new Tow-Away Zones or Designated Parking Areas as the District acquires additional common areas. Such designations of new Tow-Away Zones and Designated Parking Areas are subject to proper signage and notice prior to enforcement of these rules in such areas.

EXHIBIT A – *Designated Parking Areas (highlighted areas)*

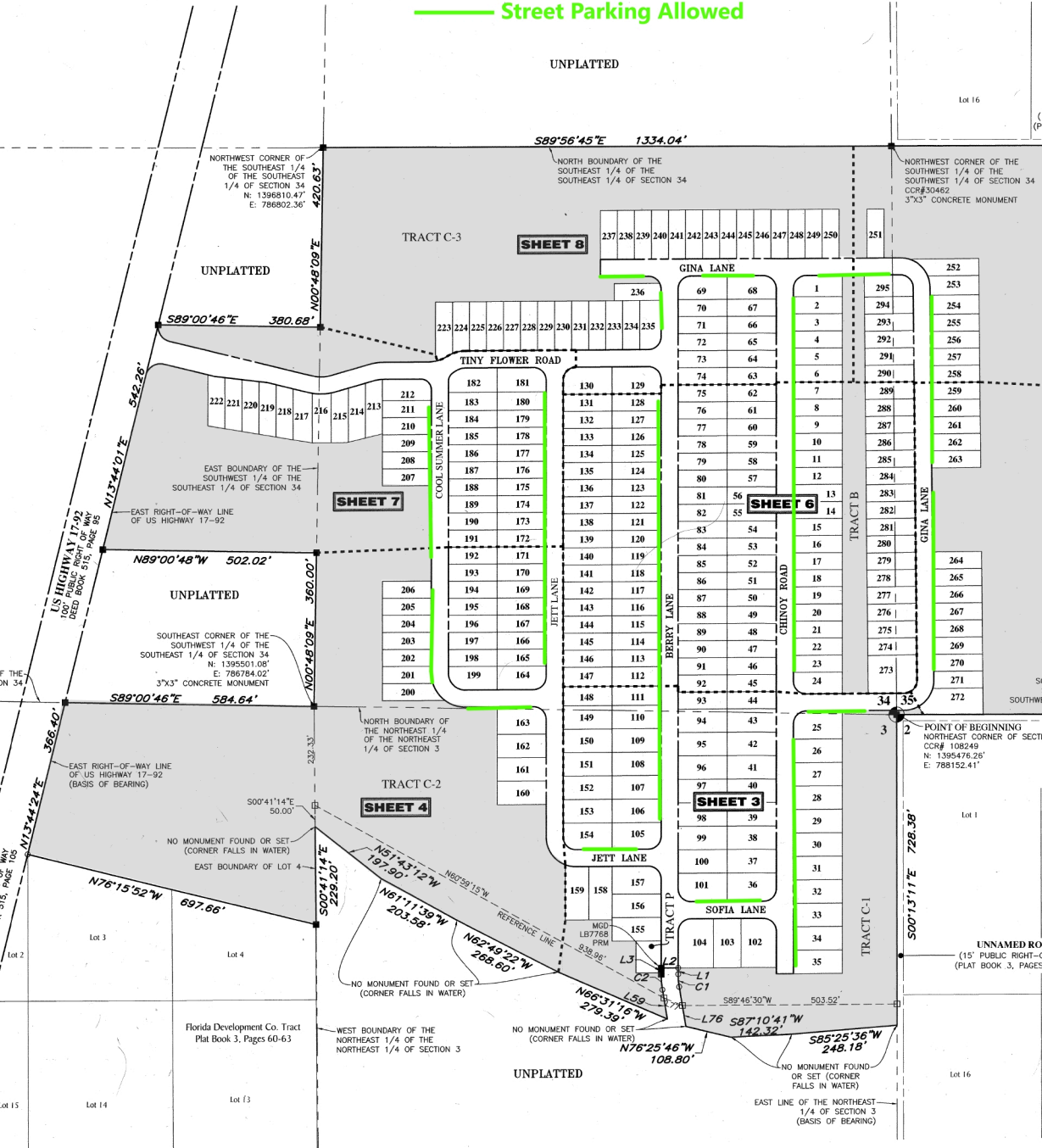
Effective date: August 6, 2024

North Powerline Road CDD

Phase 1 - Street Parking Map

Revised 2/26/2025

Street Parking Allowed



PHASE 1B-2 & 2 - Street Parking Map

———— Street Parking Allowed

